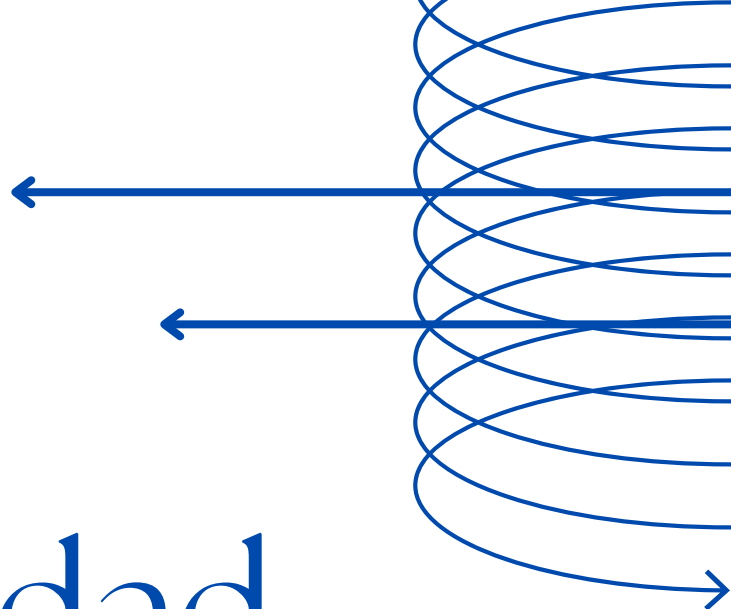


COLECCIÓN
ANTONIO RAMOS CRESPO
N.º 9



Fidelidad

Pasodoble

ARCHIVO DE LA ASOCIACIÓN CULTURAL MUSICAL
"COLÁS CHICHARRO"
La Carolina
(Jaén)

12 OBRAS ORIGINALES PARA
ORQUESTA DE PLECTRO
CEDIDAS A LOS SOCIOS DE LA FEGIP



Compositor:
ANTONIO RAMOS CRESPO

ASOCIACION CULTURAL MUSICAL
" *Colás Chicharro* "
ORQUESTA DE PULSO Y PÚA



FIDELIDAD

PASODOBLE

Dedicado a mi buen amigo Julio Zapata a título póstumo

Antonio Ramos Crespo

Arreglos para plectro: **Antonio Ramos Crespo.**

FIDELIDAD

PASODOBLE

Guión

DEDICADO A MI BUEN AMIGO "JULIO ZAPATA"
A TÍTULO PÓSTUMO

ANTONIO RAMOS CRESPO

Bandurria Solista y 1ª

Bandurria 2ª

Laúdes

Guitarras

Measures 1-6 of the musical score. The score is for four parts: Bandurria Solista y 1ª, Bandurria 2ª, Laúdes, and Guitarras. The time signature is 2/4. The key signature has one sharp (F#). The first three measures contain a triplet of eighth notes in the Bandurria and Laúdes parts, and a triplet of eighth notes in the Guitarras part. The fourth measure contains a triplet of eighth notes in the Bandurria and Laúdes parts, and a triplet of eighth notes in the Guitarras part. The fifth and sixth measures contain a triplet of eighth notes in the Bandurria and Laúdes parts, and a triplet of eighth notes in the Guitarras part.

7

Measures 7-12 of the musical score. The score is for four parts: Bandurria Solista y 1ª, Bandurria 2ª, Laúdes, and Guitarras. The time signature is 2/4. The key signature has one sharp (F#). The first three measures contain a triplet of eighth notes in the Bandurria and Laúdes parts, and a triplet of eighth notes in the Guitarras part. The fourth measure contains a triplet of eighth notes in the Bandurria and Laúdes parts, and a triplet of eighth notes in the Guitarras part. The fifth and sixth measures contain a triplet of eighth notes in the Bandurria and Laúdes parts, and a triplet of eighth notes in the Guitarras part. The word "madera" is written below the Guitarras part in measure 10.

13

Measures 13-18 of the musical score. The score is for four parts: Bandurria Solista y 1ª, Bandurria 2ª, Laúdes, and Guitarras. The time signature is 2/4. The key signature has one sharp (F#). The first three measures contain a triplet of eighth notes in the Bandurria and Laúdes parts, and a triplet of eighth notes in the Guitarras part. The fourth measure contains a triplet of eighth notes in the Bandurria and Laúdes parts, and a triplet of eighth notes in the Guitarras part. The fifth and sixth measures contain a triplet of eighth notes in the Bandurria and Laúdes parts, and a triplet of eighth notes in the Guitarras part. The word "2ª vez" is written below the Laúdes part in measure 15.

20

Measures 20-27 of the musical score. The score is written for four staves. The top two staves (treble clef) feature a melody with eighth and sixteenth notes, including a triplet in measure 26. The bottom two staves (bass clef) provide a harmonic accompaniment with chords and moving lines. The key signature has two sharps (F# and C#).

28

Measures 28-34 of the musical score. The score continues with four staves. The melody in the top staves includes a triplet in measure 32. The accompaniment in the bottom staves consists of chords and rhythmic patterns. The key signature remains two sharps.

35

Measures 35-42 of the musical score. The score continues with four staves. The melody in the top staves includes a triplet in measure 40. The accompaniment in the bottom staves consists of chords and rhythmic patterns. The key signature remains two sharps.

43

f *p* *p* *f* *p*

50

1. 2.

f *f* *sfz* *f* *sfz* *f*

57

p *p* *p* *p*

64

1. 2.

f *mf* *f* *mf* *f*

Palo en Plato *f*

71

f *mf* *f* *mf* *f*

Sigue en 8^a grave también

79

Solo de Trompeta

mf *mf* *mf* *mf* *mf*

FIDELIDAD.-Guión

86

A placer

90

2ª vez

tr.

mf

f

p

madera

p

95

tr.

p

101

Measures 101-106 of the musical score. The key signature is three sharps (F#, C#, G#). The score consists of four staves. The top staff features a complex melodic line with many beamed sixteenth notes and rests, including trills marked 'tr' and 'tr~'. The second and third staves have a more melodic line with eighth and quarter notes, some with slurs. The bottom staff provides a harmonic accompaniment with chords and eighth notes.

107

Measures 107-112 of the musical score. The key signature remains three sharps. The top staff continues with complex melodic patterns, including trills marked 'tr' and 'tr:'. The second and third staves show a melodic line with slurs and some chromatic movement. The bottom staff continues with the harmonic accompaniment, featuring chords and eighth notes.

113

Measures 113-118 of the musical score. The key signature is three sharps. The top staff features complex melodic patterns with trills marked 'tr'. The second and third staves have a melodic line with slurs and some chromatic movement. The bottom staff continues with the harmonic accompaniment, featuring chords and eighth notes.

120

1. 2.

f

127

p

134

p *cresc.* *hasta el ff* *ff*

141

rit A Tpo

rit A Tpo

rit A Tpo

rit A Tpo

148

148

155

155

II

163

Measures 163-168 of the musical score. The system consists of four staves. The top two staves (treble clef) feature a vocal melody with a long, sweeping slur across measures 163-168. The bottom two staves (bass clef) provide a harmonic accompaniment with chords and moving lines. The key signature is three sharps (F#, C#, G#).

169

Measures 169-172 of the musical score. The system consists of four staves. The top two staves (treble clef) continue the vocal melody with a long slur. The bottom two staves (bass clef) continue the harmonic accompaniment. The key signature is three sharps (F#, C#, G#).

173

Measures 173-178 of the musical score. The system consists of four staves. The top two staves (treble clef) show the vocal melody with more rhythmic movement. The bottom two staves (bass clef) continue the harmonic accompaniment. The key signature is three sharps (F#, C#, G#).

Bandurrias Solista A y B

FIDELIDAD

PASODOBLE

DEDICADO A MI BUEN AMIGO "JULIO ZAPATA"
A TÍTULO PÓSTUMO

ANTONIO RAMOS CRESPO

$\text{♩} = 100$

f

9

16

p

25

35

f

45

1. 2.

f

54

p

63

1. 2.

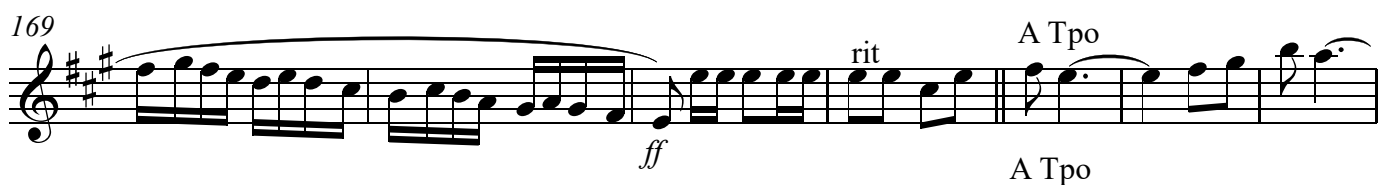
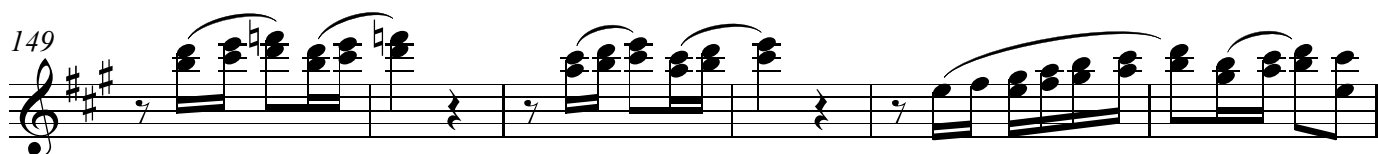
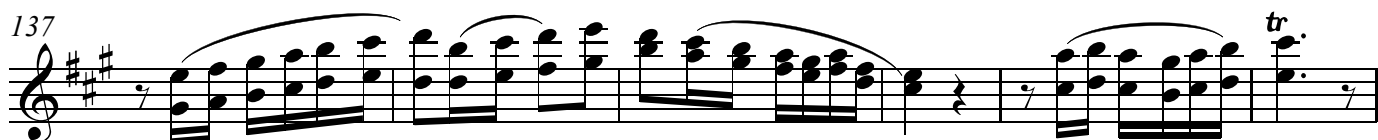
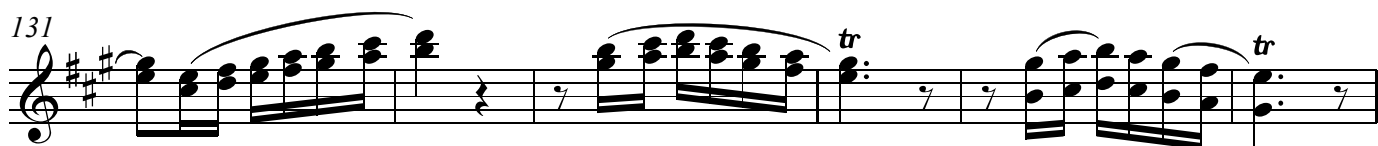
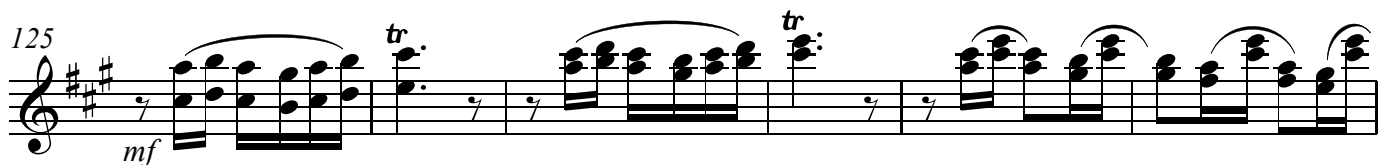
f *mf*

71

2 3 4 2 3 4

81

mf *f* *p*



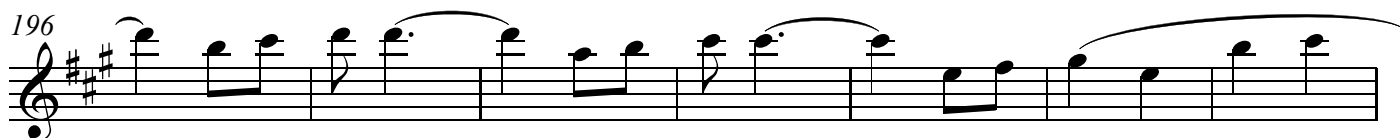
176



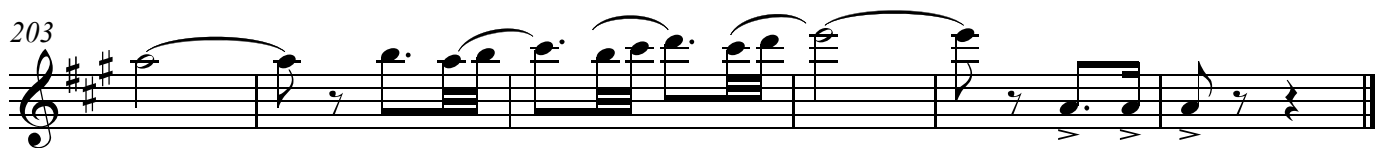
186



196



203



FIDELIDAD

PASODOBLE

Bandurria 1ª

DEDICADO A MI BUEN AMIGO "JULIO ZAPATA"

A TÍTULO PÓSTUMO

♩ = 100

ANTONIO RAMOS CRESPO

9

17

27

37

47

56

65

74

85

f

p

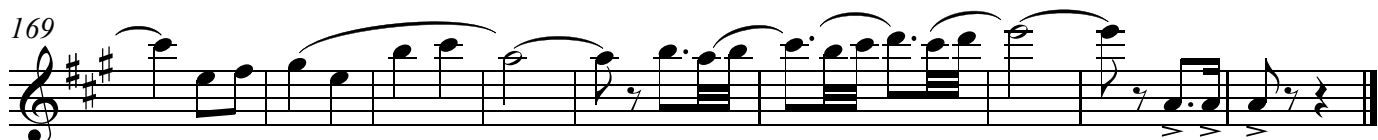
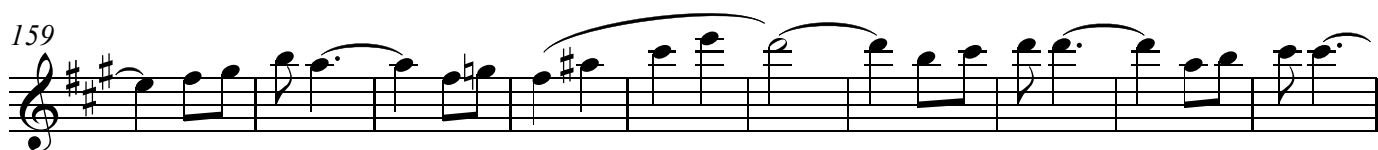
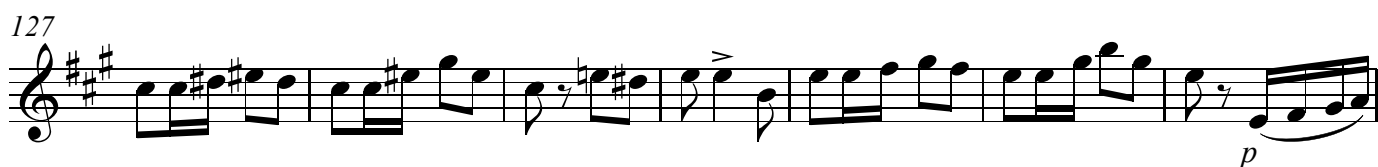
f

p

mf

f

p



FIDELIDAD

PASODOBLE

Bandurria 2ª

DEDICADO A MI BUEN AMIGO "JULIO ZAPATA"
A TÍTULO PÓSTUMO

ANTONIO RAMOS CRESPO

♩ = 100

9

16

25

35

45

54

63

71

f

p

f

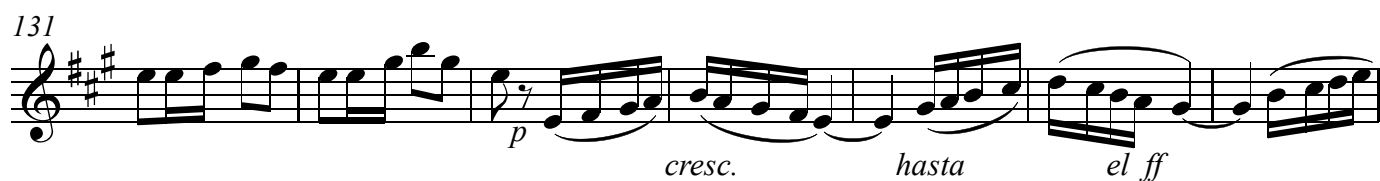
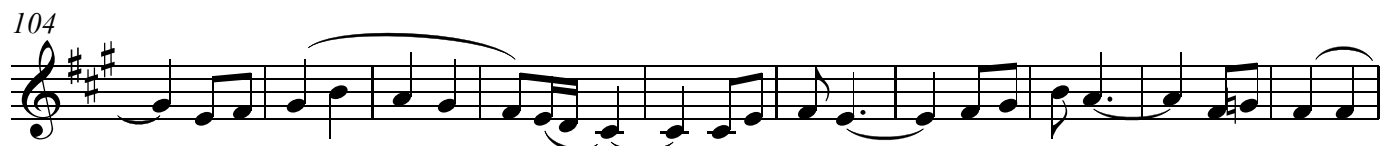
p

f

mf

1. 2.

1. 2.



FIDELIDAD

PASODOBLE

Laúd 1º

DEDICADO A MI BUEN AMIGO "JULIO ZAPATA"
A TÍTULO PÓSTUMO

♩ = 100

ANTONIO RAMOS CRESPO

f

10

p

19

p

29

40

f *p*

50

sfz *p*

59

68

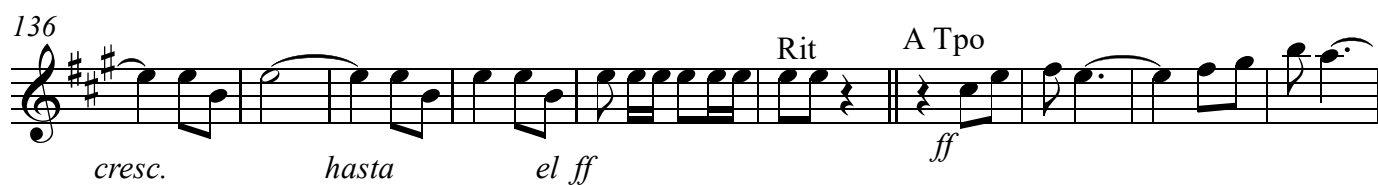
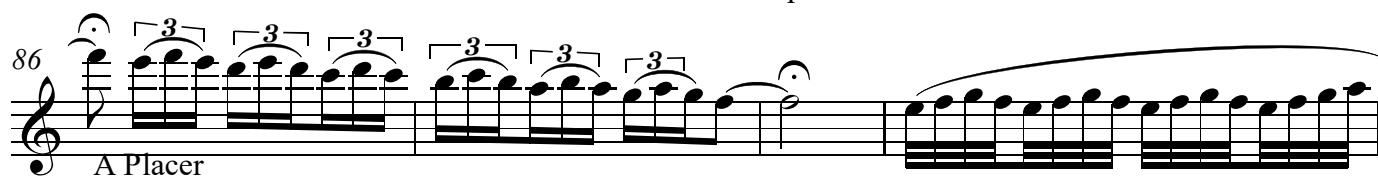
f

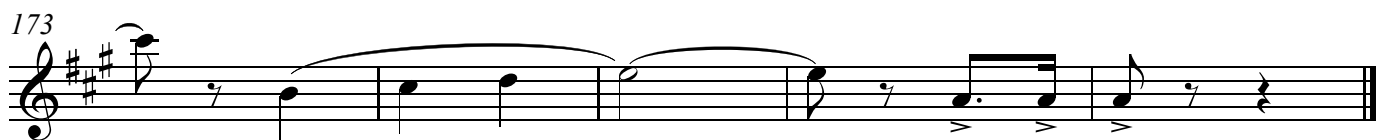
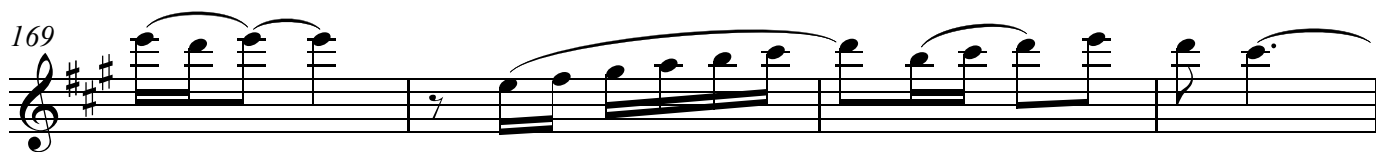
77

p

52

f





FIDELIDAD

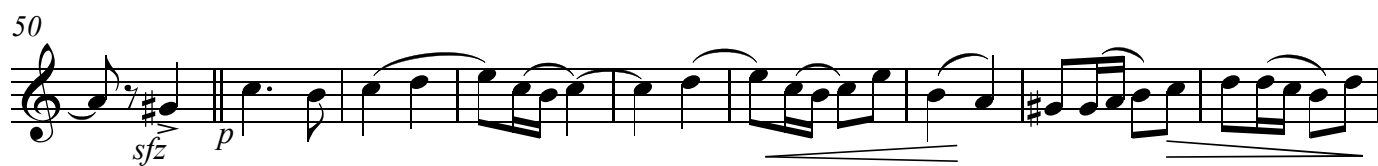
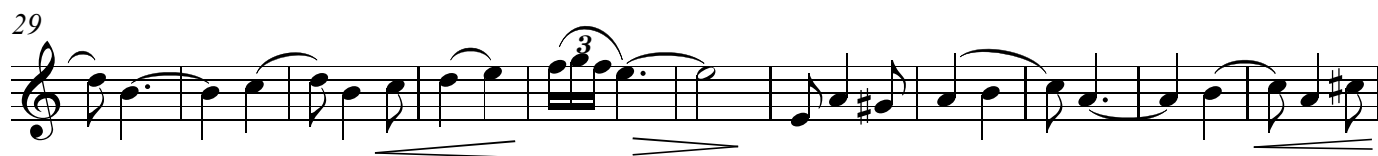
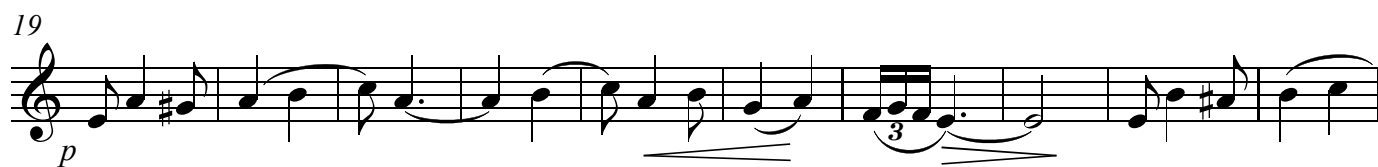
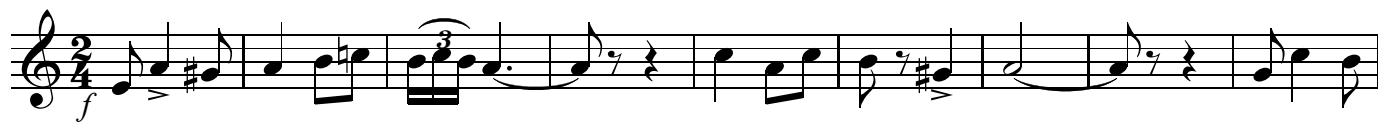
PASODOBLE

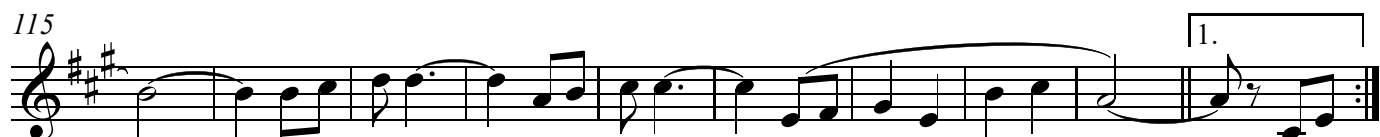
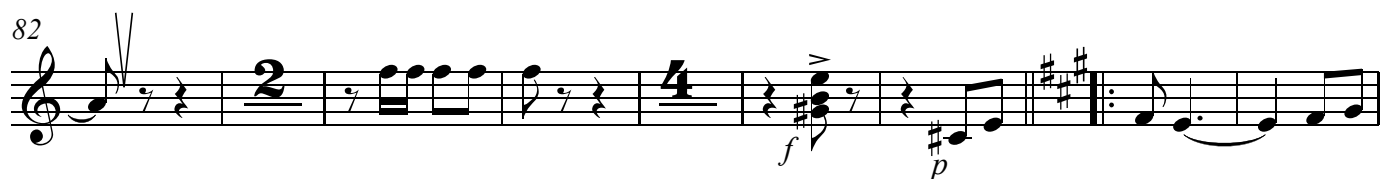
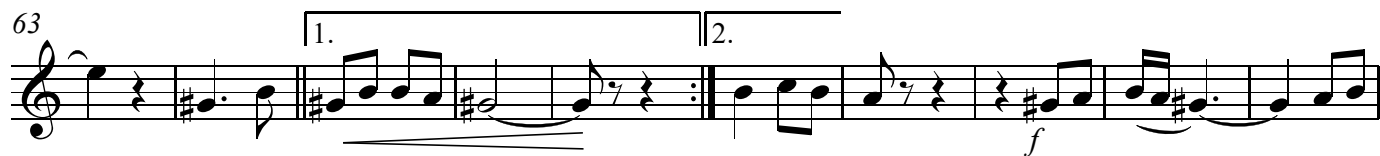
Laúd 2º

DEDICADO A MI BUEN AMIGO "JULIO ZAPATA"
A TÍTULO PÓSTUMO

♩ = 100

ANTONIO RAMOS CRESPO





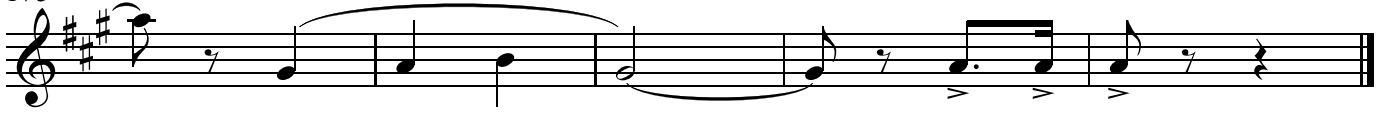
162



169



173



FIDELIDAD

PASODOBLE

Guitarra

DEDICADO A MI BUEN AMIGO "JULIO ZAPATA"
A TÍTULO PÓSTUMO

ANTONIO RAMOS CRESPO

♩=100

f *madera*

9

17 *p* *p*

25

32

40 *f* *p*

48 1. 2. *sfz* *f*

56 *p*

64 1. 2. *f* escoger una

72

81

mf

p

madera

93

100

107

115

122

1. 2.

f

129

cresc. hasta el ff

ff

p

138

rit

A Tpo

145

152

A guitar score for the piece 'FIDELIDAD'. The score is written on a single staff in treble clef with a key signature of two sharps (F# and C#). It consists of 15 measures, numbered 72 to 152. The notation includes various guitar-specific techniques: slurs, ties, and accents (v) are used throughout. Dynamic markings include *mf* (mezzo-forte), *p* (piano), *f* (forte), and *ff* (fortissimo). Performance instructions such as *cresc. hasta el ff* (crescendo until fortissimo) and *rit* (ritardando) are present. A section starting at measure 122 is marked with first and second endings. A tempo change to 'A Tpo' (Allegro) is indicated at measure 138. The word 'madera' (wood) is written below the staff at measure 81, likely referring to the sound of the guitar body. The score ends with a repeat sign at measure 152.

159

II

167

172

FIDELIDAD

PASODOBLE

Guitarra Bajo

DEDICADO A MI BUEN AMIGO "JULIO ZAPATA"
A TÍTULO PÓSTUMO

♩ = 100

ANTONIO RAMOS CRESPO

10

19

27

36

44

52

60

68

f

p

f

p

sfz

f

1.

2.

1.

2.

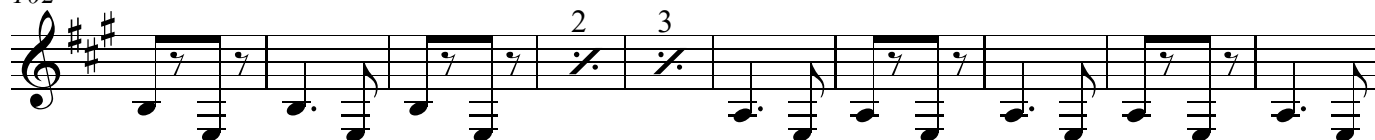
79



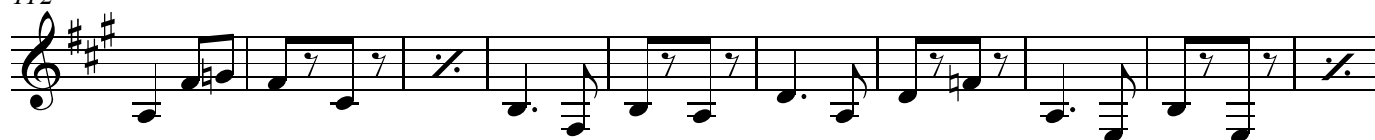
93



102



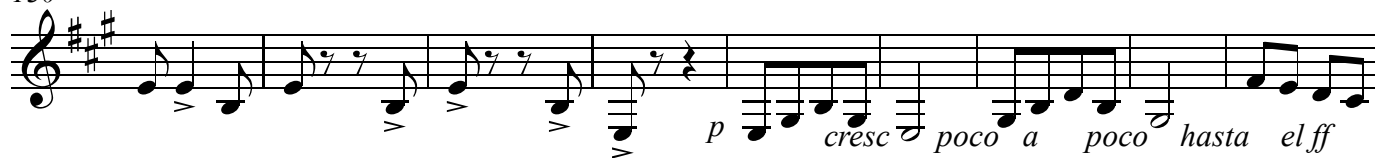
112



122



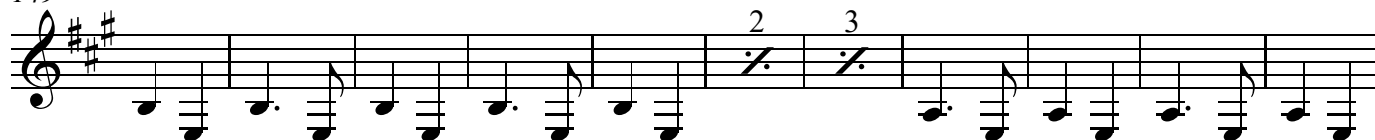
130



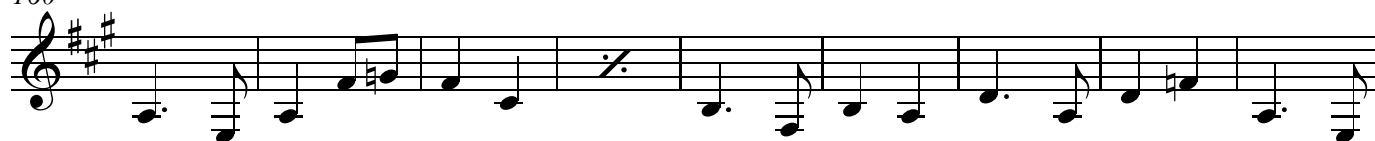
139



149



160



169



FIDELIDAD

PASODOBLE

Percusión

DEDICADO A MI BUEN AMIGO "JULIO ZAPATA"
A TÍTULO PÓSTUMO

ANTONIO RAMOS CRESPO

$\text{♩} = 100$

Caja

Bombo

f

14

p

22

30

38

f

47

p

sfz

f

57

p

67

2.

Palo en Plato

mf

78

mf

f

92

p

100



109



117



126



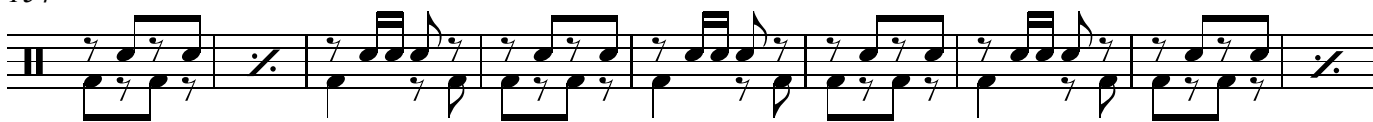
135



145



154

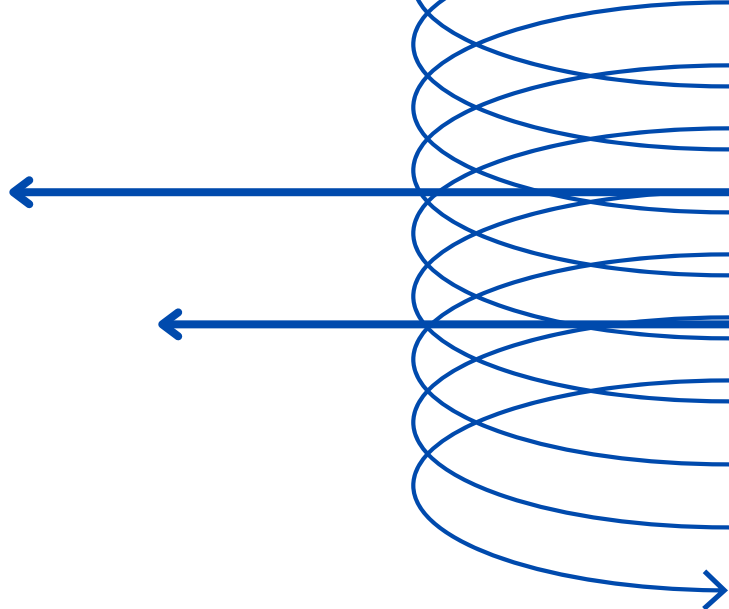


163



169





fegip

Federación Española de Guitarra
e Instrumentos de Plectro

c/ Mayor, 27
26300 Nájera (La Rioja)